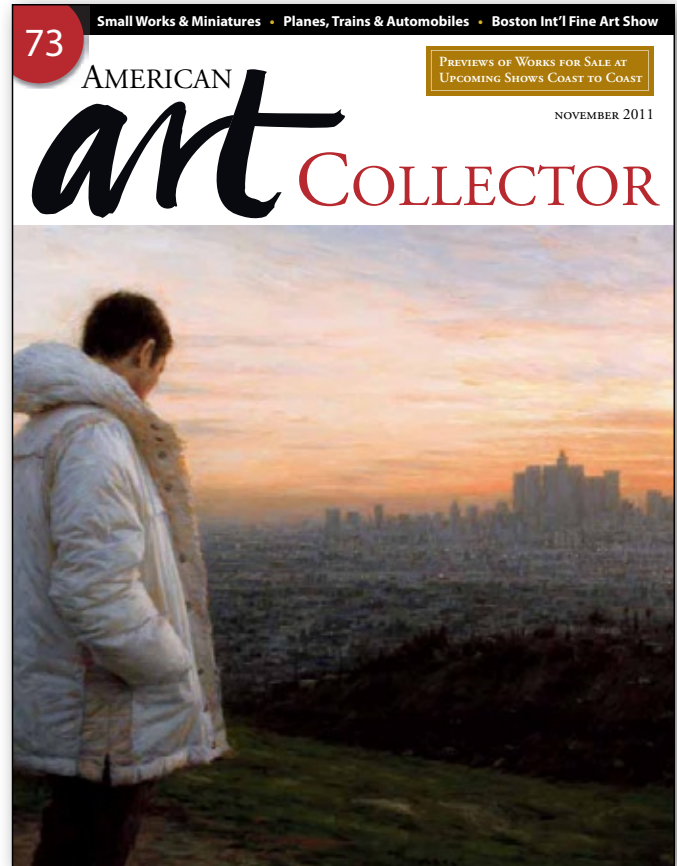


As seen in the  
November 2011 issue of

 AMERICAN  
*art* COLLECTOR



**UPCOMING GROUP SHOW**

*Up to 18 works*

November 3-30, 2011

Adam Cave Fine Art

115½ E. Hargett Street, 2<sup>nd</sup> Floor

Raleigh, NC 27601

(919) 838-6692

• SHOW LOCATION RALEIGH, NC

## BYRON GIN AND TISHA WEDDINGTON

### Birds of a feather

Although **Byron Gin** and **Tisha Weddington** have different artistic styles both artists have been enthralled with bird imagery in recent years, making them an ideal pairing for the upcoming two-person exhibit at Adam Cave Fine Art. Appropriately titled *Birds of a Feather*, the show runs November 3 to 30 and marks the first time these two artists will display their work together. The Raleigh, North Carolina-

based gallery will host a reception for the exhibit on November 4, 6 to 9 p.m.

Byron Gin's art, as he puts it, "has always been a negotiation and collaboration between abstraction and realism."

"In earlier works the tendency was for the abstract to serve the real by way of providing a space for the subject to exist," explains Gin. "I'm starting to see a shift in that balance where the abstract elements play a larger role in the

work, but the realistic elements remain to provide a lively dialogue."

Gin's new work is inspired by the things around him—birds in his backyard, locks on a table at a flea market, etc. It also is informed by the paint itself and "by the process of discovery that comes from layering and manipulating paint on canvas." He also remarks that his goal is to invite viewers to look and appreciate looking at his paintings.



BYRON GIN, COMMON YELLOWTHROAT, OIL ON CANVAS, 16 X 20"



BYRON GIN, FINCH/BOWL, OIL ON CANVAS, 16 X 32"



TISHA WEDDINGTON, WINTERBIRD, OIL ON CANVAS, 30 X 24"

“Maybe first the subject attracts the eye—a bird or subject so common it often goes unseen. Next, to the paint itself, the colors, textures, and layers, and to appreciate looking at the paint simply as paint,” says Gin. “*Landing* embodies this goal. It focuses on the ubiquitous gull removed of its natural surroundings, to be appreciated anew, while the subtle marks and the variations of color draw the viewer into a contemplation of the paint surface.”

Tisha Weddington on the other hand has more surrealistic and fantastical elements to her paintings.

“I strive to create an air of beauty, comedy and the surreal in my work, which has become even more evident in these recent paintings,” she remarks. “I try to surprise myself by reinventing existing ideas and exploring accidental outcomes. By doing this my goal is to give the viewer a sense of wonder and delight with each new painting.”

Surreal themes are prevalent in Weddington’s paintings, but stylistically she feels her work is always evolving. “Much of my inspiration comes from Asian art, old circus imagery, bullfighting posters, and most recently birds,” says Weddington. “I like to take these elements, combine them, and break them down into fresh ideas. From a technical aspect, I am always working to find a balance between focusing on detail while still maintaining an openness.”

Weddington, who also is inspired by her curious infant son, wants her work “to instill a sense of wonderment in everyone, big and small.” ●

For a direct link to the exhibiting gallery go to



[www.americanartcollector.com](http://www.americanartcollector.com)